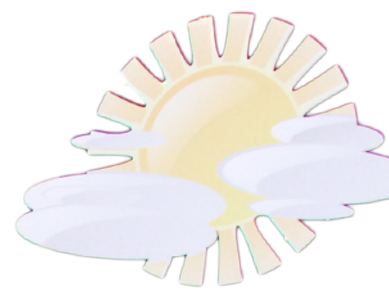


## BEGINNINGS



Plixo (formerly known as Li Sin Signage) has been operating in Singapore for more than 20 years. We have rebranded ourselves as PLIXO to embrace the new integration of technology and capabilities that we offer to our valuable clients.

## OUR COMMITMENT

At Plixo, we constantly strive to ensure that products and services that we deliver are timely and of the highest quality. Geared towards product and service excellence, our aim is to provide a total solution for our clients' requirements.

## PLIXO'S UNIQUE ADVANTAGES

Our key advantage at Plixo is the synergy between us, our customers and technologies we master to cater to ever evolving requirements. Deep understanding of your needs with the design and production capabilities enables us, at Plixo, to provide you what is beyond current industry practices.

Our UNIQUE capabilities:

- ✔ Under one roof design, enhancement, and manufacturing
- ✔ 8 colour high res ultra-wide, up to 2.5 m, digital prints at 50 sqm/h
- ✔ Laser cutting with 150W laser enabling deeper cuts & wider range of materials
- ✔ Innovative fiberglass and resin casting for custom colour, texture, shape, strength and weight
- ✔ High quality materials imported directly to guarantee quality and long lasting solutions
- ✔ Technology integrated solutions (LED fixtures, electronic & software control etc)
- ✔ Value added services to ensure that clients are hassle free



# LARGE FORMAT PRINTING

At Plixo, we offer Hi -quality, 8 Colours Printing of up to 2.5m wide at competitive prices

## WHAT WE CAN DO

- ✍ Up to 2.5m wide
- ✍ 2 years warranty against colour fading & peeling
- ✍ 8 colours printing and lamination [Oracal]
- ✍ Printing on various materials like backlit film, stickers(indoors and outdoors), banners etc...
- ✍ True Black and White printing (in grayscale with Grey and light grey colours)
- ✍ Up to 720 dpi in resolution
- ✍ Using original ink from Japan
- ✍ Includes mounting, installation, etc..

## USAGES

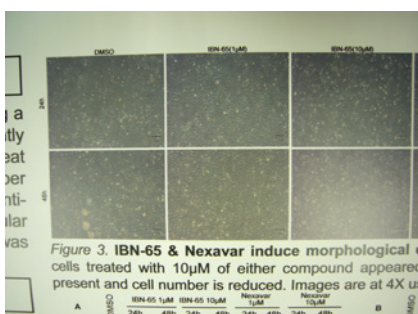
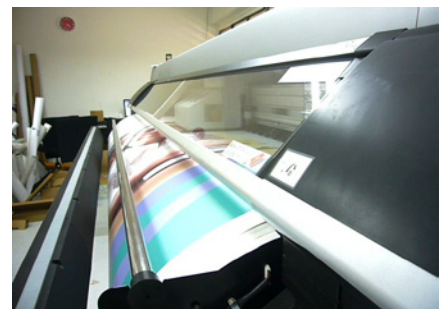
- ✍ Exhibitions and descriptors
- ✍ Permit & License sign
- ✍ Events and Promotions
- ✍ Temporary Signs & Directions

## MATERIALS FOR MOUNTING

- ✍ Aluminium (outdoors)
- ✍ Composite Panels (indoors, outdoors)
- ✍ Twin-wall PC (outdoors)
- ✍ Corrugated PP (indoors, outdoors)
- ✍ K-Board & Foam boards (indoors)

## VALUE ADDED SERVICES

- ✍ Design (artwork)
- ✍ On site delivery and installation



# LASER SERVICES

*At Plixo, we provide Laser Cutting and Engraving Services to satisfy all industrial needs*

## SUITABLE FOR VARIOUS INDUSTRIES

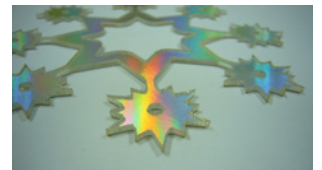
- ✔ **Design & Decorations** : Shapes, Logos, Letters....
- ✔ **Gifts & Awards** : Personalised cut & engraving
- ✔ **Prototyping** : Mock-ups for design validation
- ✔ **Packaging** : complex shape cutting
- ✔ **Engineering** : 2.5D parts cutting (gaskets, jigs etc)



## MATERIALS

- ✔ **Plastics**  
Acrylic, Corrugated PP, PC & PE film, PU foam
- ✔ **Wood-based**  
Solidwood, Plywood, Laminate/Formica, MDF
- ✔ **Others**  
Foam Boards, Corrugated carton, Rubber, Teflon

*.....and all their combinations*



## LASER SPECIFICATIONS

- ✔ **Large Cutting Area:** 1.3m (W) x 0.9m (L)
- ✔ **Direct Load of up to** 4ft x 8ft material
- ✔ **0.05mm accuracy**
- ✔ **150W**



## SUPPORTED FILE FORMATS

- ✔ Coreldraw (native)
- ✔ Adobe Illustrator
- ✔ PDF, EPS
- ✔ AutoCAD etc.



## VALUE ADDED SERVICES

- ✔ Design and detail drawings
- ✔ Spray Painting
- ✔ Post Processing (Silkscreen, Sticker pasting)
- ✔ Assembly into final products

# FIBERGLASS & RESIN CASTING

*At Plixo, we create high end fiberglass and resin cast for product displays matching your unique requirements for colour, texture, shape, strength and weight*

## TYPE OF PRODUCTS

- ☛ Design & Decorations : Raisers, Holders, Frames...
- ☛ Interior Designs : Tabletops, Panels, Boxes...
- ☛ Construction : Openings, Hatches, Containers...



## MATERIALS

### RESINS

- ☛ Epoxy
- ☛ Polyester
- ☛ Acrylic

### REINFORCEMENT

- ☛ Fiberglass : WR, CSM, Filaments, continuous
- ☛ Carbon Fibre : WR, CSM

### COMPOSITE

- ☛ Internal layers : Plywood, honeycomb, foam, recycled & bio-based
- ☛ Fillers : Silica, micro-spheres, flakes, metal based, decoratives

... and their combinations



## PROCESSES

- ☛ Open Moulding
- ☛ Hand Lay-up
- ☛ Spray Lay-up



## FINAL PRODUCTS

- ☛ Ornamental, Functional, Structural and All-in-one



## VALUE ADDED SERVICES

- ☛ Design and detail drawings
- ☛ Post Processing (machining, coating, painting, assembly)
- ☛ Onsite delivery, installation & commissioning



# SIGNS AND SIGNBOARDS

*At Plixo, we offer Hi -quality, Non-joining and Ultra Wide signboards at competitive prices*

## WHAT WE CAN DO

- ✔ Up to 7.8m [W] x 2.0m [H] without joining!
- ✔ 5 years warranty on material
- ✔ 2 years warranty against colour fading & peeling
- ✔ 8C printing and lamination [Oracal]
- ✔ Includes mounting guide, screws, etc..

## USAGES

- ✔ Signs for hoardings
- ✔ Permit & License signboards
- ✔ Events and Promotions
- ✔ Temporary Signs & Directions

## MATERIALS FOR MOUNTING

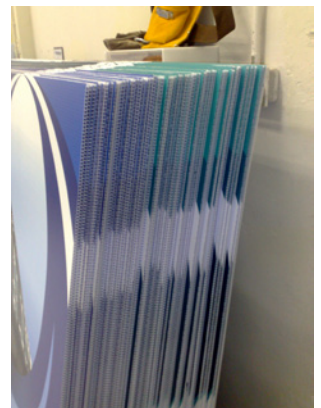
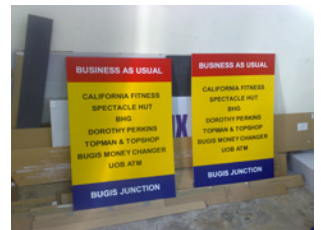
- ✔ Aluminium (outdoors)
- ✔ Composite Panels (indoors, outdoors)
- ✔ Twin-wall PC (outdoors)
- ✔ Corrugated PP (indoors, outdoors)
- ✔ K-Board & Foam boards (indoors)

## VALUE ADDED SERVICES

- ✔ Design (artwork)
- ✔ On site delivery and installation

## CLIENTS

- ✔ **Construction industry**  
Land Transport Authority(LTA), Soletanche Bachy/ Koh Brothers
- ✔ **Food and Beverage**  
Deli Morrocan, Sedap Food Court, EUU Pte Ltd (Bean in a cup)
- ✔ **Outsourced jobs**  
4C Printing Solutions, Cattel Engineering, Tengah Engineering



# SERVICE PORTFOLIO

## On Site installation and Construction



☛ Rod planting (Sentosa)



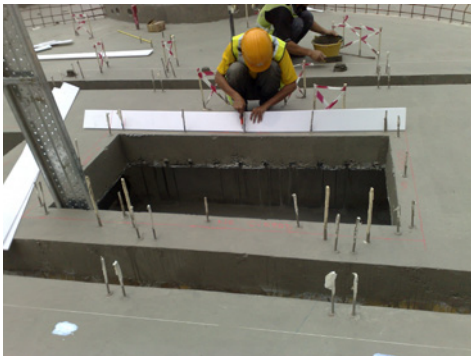
☛ Rod planting (Sentosa)



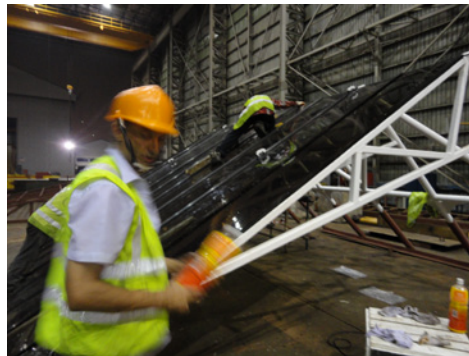
☛ Installation of Submarine roof



☛ Submarine roof (completed)



☛ Template taking (Sentosa)



☛ Preparation of submarine roofing



☛ Transporting of signages (LTA)



☛ Signboard Mounting (LTA)



☛ Delivery of static display to site (Nanyang Polytechnic)



☛ Setting up of display on site (Nanyang Polytechnic)



# PRODUCT PORTFOLIO

## Corporate Clients



☛ Samsung Galaxy S Logo



☛ BCA Award Plaque  
(Front UV Printing)



☛ BCA Award Plaque  
(Back Laser engraving)



☛ Tiger Balm



☛ Redz Interior Design



☛ Smart Brain Singapore award



☛ Nanyang Polytechnics Fusion X



☛ Nanyang Polytechnics Fusion X



☛ Land Transport Authority



☛ Changi Airport Group

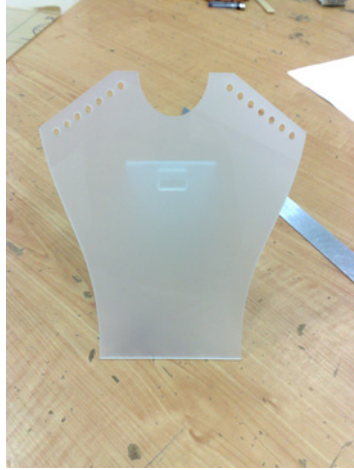


# PRODUCT PORTFOLIO

## Customised Designs



☛ Novelty Gifts



☛ Jewellery holder



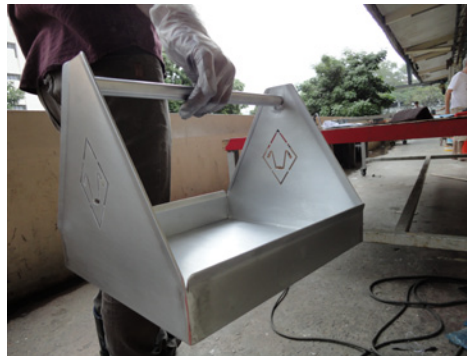
☛ Resin Casting



☛ Ultra Wide Printing



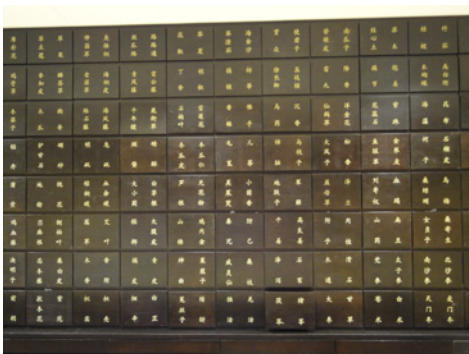
☛ Laser engraving on special material



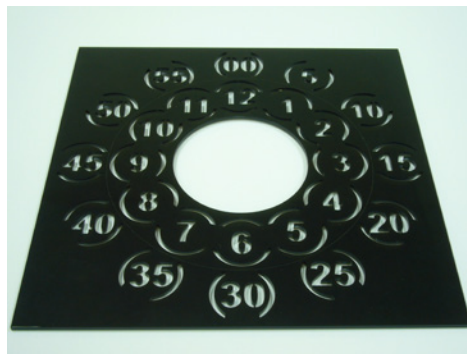
☛ Aluminium tray Laser cutting



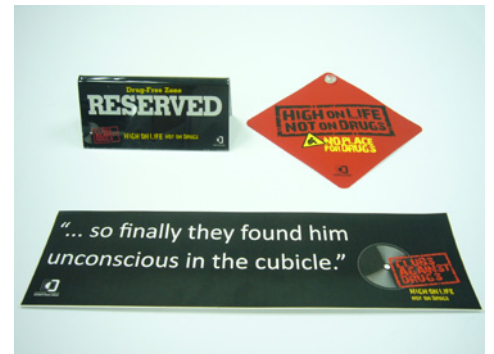
☛ Laser cutting on special material



☛ Laser engraving of chinese characters on wood



☛ In house design



☛ Prints and varieties



# PRODUCT PORTFOLIO

## Innovations



Outdoor display



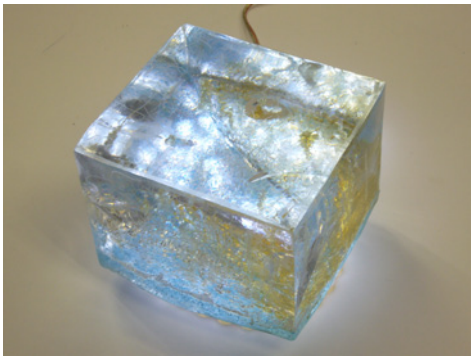
Casting ornaments



Customised Stand



8 Colour Printing



Resin Casting



In house designed clock



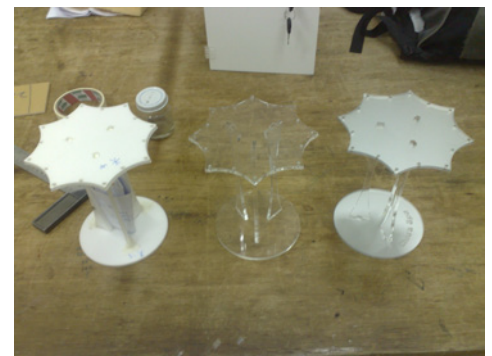
Customised laser cutting on wood



Laser Cutting with Profile



LED signboards



Total solution: Design-> Mockup  
-> Actual Product

# PRODUCT PORTFOLIO

For various requirements



☛ Product Advertising



☛ Office (indoors)



☛ Laboratory Usage



☛ Survey boxes



☛ Indoor Static Displays



☛ Outdoor weatherproof signage



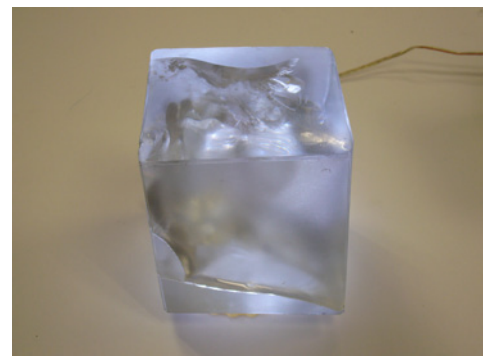
☛ Retail Gifts



☛ Large Indoor Display Stands



☛ Industrial Jigs



☛ Home Furnishing

Where Innovation, Art and Workmanship Join Hands